

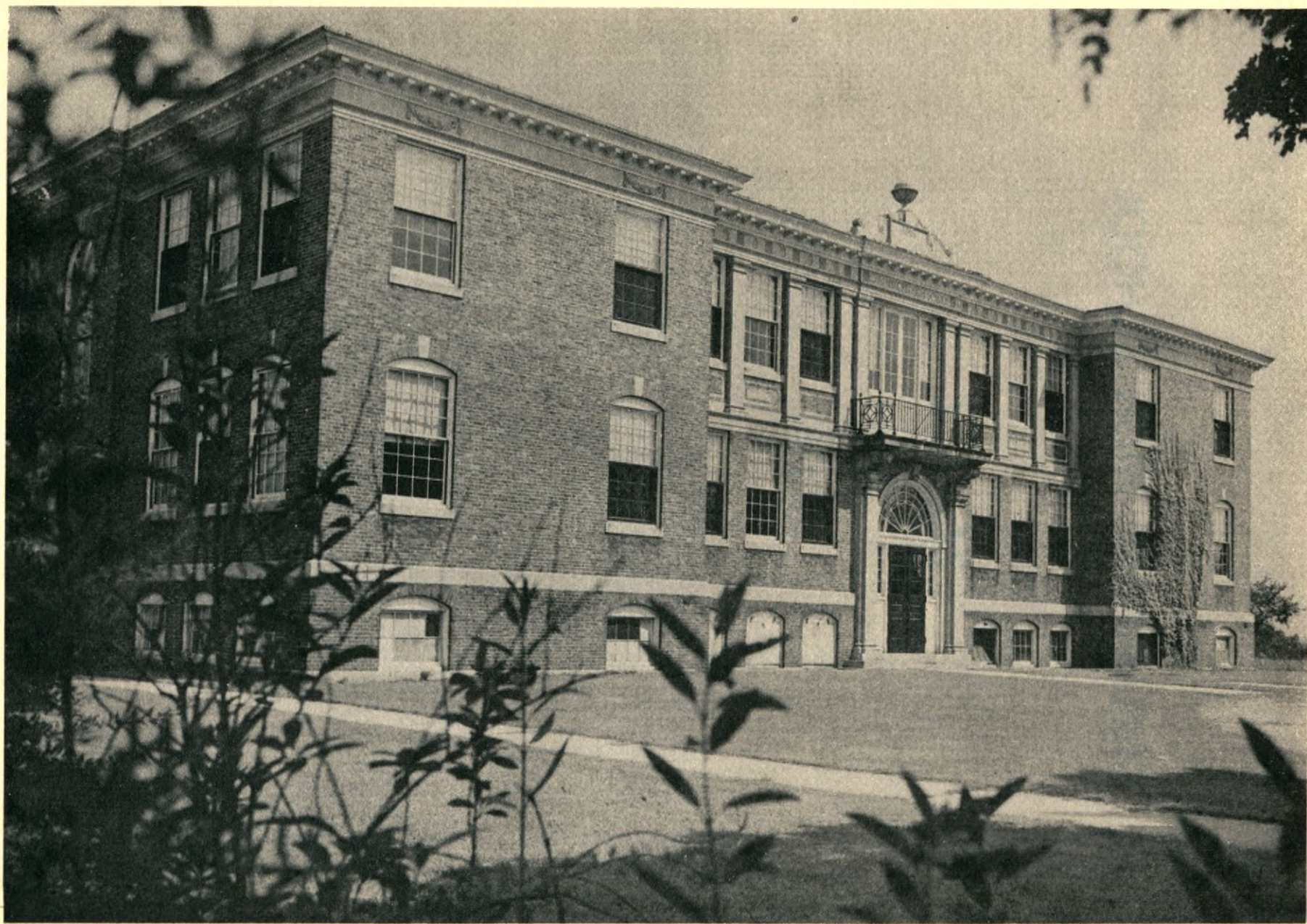
M. B. Scobaria



CHELMSFORD HIGH SCHOOL

Yearbook
of
1948

CHELMSFORD, MASSACHUSETTS



CHELMSFORD HIGH SCHOOL



Board of Editors

We who work on this book pause to wonder how many times in days to come our hands will turn its pages. Unimaginable circumstances and retrospection will impel us to lift it from its place. What we shall have then become, we do not know, but we labor in the hope that these pages, whenever scanned, may flash light into the dimness of recollection and keep bright our memory of this golden time.

EDITORS:

Hazel Abrahamson
Eleanor D. Brown
Edith Hall
Joan Hartley
William Reid

ASSISTANT EDITORS:

Bessie Blackie
Eleanor DeGuise
Norma Durrell
Donald Hankinson
Ray Pike
Barbara Wylie

Literary Adviser—Charlotte S. Carriel

Business Advisers—C. Edith McCarthy, Ernestine Maynard

Class Ode

As time goes marching onward
And our goal is attained,
We tender our thanksgiving
For knowledge we have gained.
And as our goal is upward,
The need of guidance calls,
For now, O Alma Mater,
We leave your fostering halls.

* * *

Yet ever we'll remember
The years that have just past,
The priceless counsel given,
The friendships that will last
The warmth of joyous laughter,
Shared victory and defeat.
These mem'ries that we cherish
Help make our lives complete.

* * *

Dear Lord, now we beseech thee
Keep our steps firm and sure
As on life's path we travel
Its trials to endure.
And may our way lead upward
Toward that bright, shining star
That leads us ever onward;
Forbid us stray afar.

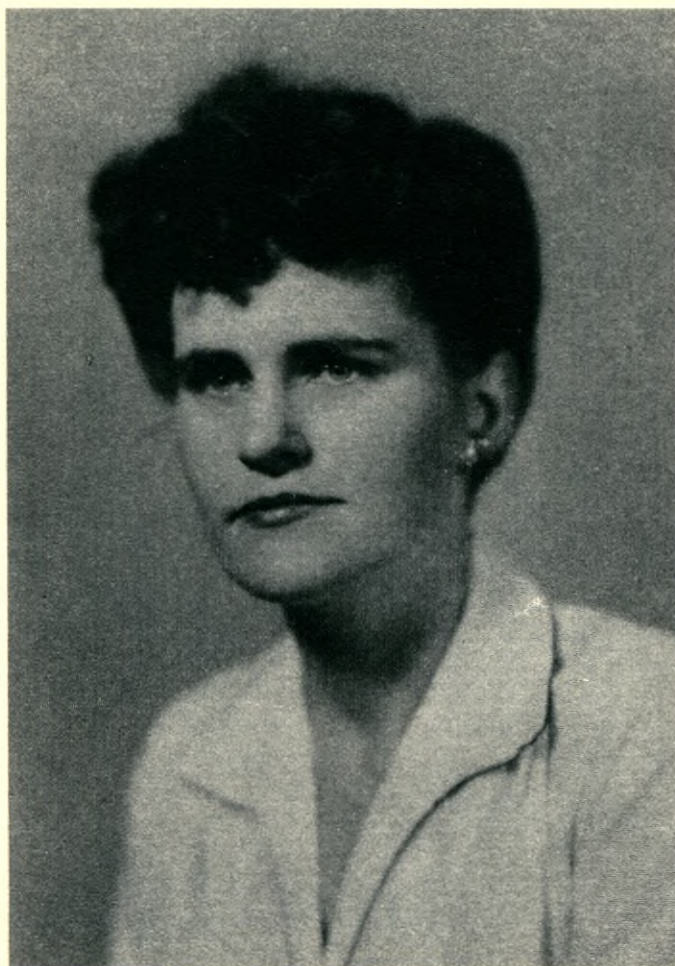
Music by Eleanor D. Brown

Words by Eleanor DeGuise

Edith Hall

Donald Hankinson

Thomas Randall



TO

MILDRED M. HEHIR

*Who with the courage of a crusader
raises castles in the air
and then builds foundations under them
We, the Class of 1948,
affectionately dedicate this,
our Yearbook.*

Education is training for action and life—a life of reason. The goal of education is a disciplined person who can apply and direct his acquired knowledge and power.

If we are to have a real new world, the sound foundation of truth and freedom will be fostered in our homes and in our schools. This task calls for intelligence as well as ideals, for integrity as well as training, for patience and faith as well as resolution and courage.

We must have faith in our homes and in our schools.

H. MORTON JEFFORDS





H. MORTON JEFFORDS

SUPERINTENDENT

*Who brings to us and to our school system the
benefit of valuable experience and sound judgment.*

Know! Care! Act!

How are you planning to pay the debt you owe for your free public school education? You owe this debt to your Parents, your Town, your State, and your Country. The amount you owe depends upon your ability to pay. You will never receive a "paid in full" receipt for this bill. As long as you live and are able to help others, you will owe on this debt for your education.

Regardless of the vocation by which you hope to receive enough to meet your financial obligation, there will be much that you should do for which you will receive little or no monetary consideration.

If you wish to continue to enjoy the American Way of Life, it is your duty to do everything you can to keep it. You should *know* all you can about our government, study its history, learn of its problems, and see the dangers confronting it. Then *care* about these problems and dangers as much as you should about your own personal ones. Finally, *act!* Take an active interest in your Town, State, and National government. Remember, you cannot continue to enjoy the privileges that are yours in our democratic form of government, if you do not meet your obligations.

LUCIAN H. BURNS





LUCIAN H. BURNS
PRINCIPAL

*Who by untiring effort has endeavored to
bring us into a better way of life.*

The Upward and Onward Trail

The morning breaks sweet and clear, and the sun shines brightly upon the beginning of the trail. We and the day are young. The climb is easy and the ascent so gentle that we are not aware of effort, but rather of pleasant exhilaration and joyous companionship. Very gradually the trail becomes more labored; more of our breath is spent in climbing and less in laughing and singing, yet the way is quite smooth, still fun. Then the trail narrows, growing rougher and steeper; sharp rocks hinder our progress; packs grow heavy. Unexpected storm clouds blot out the sun, and a heavy blackness settles over the trail. Suddenly the peak that had looked so invitingly near seems very far away and is lost in the darkness. The temptation to turn back is very strong upon us, but we cling to our determination and struggle on. At last the clouds slowly lift, the summit nears, and finally the trail brings us to the hard won peak. A glorious panorama bathed in sunlight stretches out before us. Looking back at the difficult trail, we are filled with a sense of accomplishment. We have succeeded.

So it is with life. The trail is as steep, as arduous; the difficulties and trials are as great; the goal is as high. The way will be darkened at times with trouble, and we shall long to turn back. Companions and friends will lose the path and wander into other, devious ways. Yet as we near the finish, joy will replace sorrow; success, failure. Peace will come and drive out fear. Great will be the sense of exhilaration and accomplishment for those of us who reach the goal at the end of the long, Upward and Onward Trail.

ELEANOR DEGUISE, '48





C. EDITH MCCARTHY, B.S.Ed.
Vice-Principal
Bookkeeping, Typewriting
Salem Teachers College



F. CHRISTINE BOOTH, A.B.
Latin, History
Colby College



DAISY B. MACBRAYNE, B.S.Ed., A.B.,
A.M.
English
Boston University



ERNESTINE MAYNARD, B.S.Ed.
Secretarial Subjects
Salem Teachers College



EARL JOSEPH WATT, A.B., A.M.
French
Harvard



HELEN R. POLAND, A.B.
Science, Biology
Boston University



MARY POLLARD MOGAN, B.S.Ed., M.C.S.
Typewriting, J.B.T.
Lowell Teachers College
Boston University



CHARLOTTE S. CARRIEL, A.B.
English
Mount Holyoke College



MARJORIE B. SCOBORIA, A.B., A.M.
Mathematics
Wellesley College
Radcliffe College



JOHN J. SHANNON, A.B., A.M.
History
Clark University



MURRAY B. HICKS, B.S.
Science, Mathematics
Massachusetts State College



WILLIAM P. CALLAGY, A.B.
Social Studies, Mathematics
Dartmouth College



A. T. CAMPBELL, B.A., M.E.
Social Studies
University of New Hampshire
Boston University



BERNIE LARKIN
Band Instructor



PATRICK J. PAPPALARDO, B.S.
Director of Boys' Physical Education
Boston University



MARGARET E. KEITH, B.S.
Director of Girls' Physical Education
Sargent College, B. U.

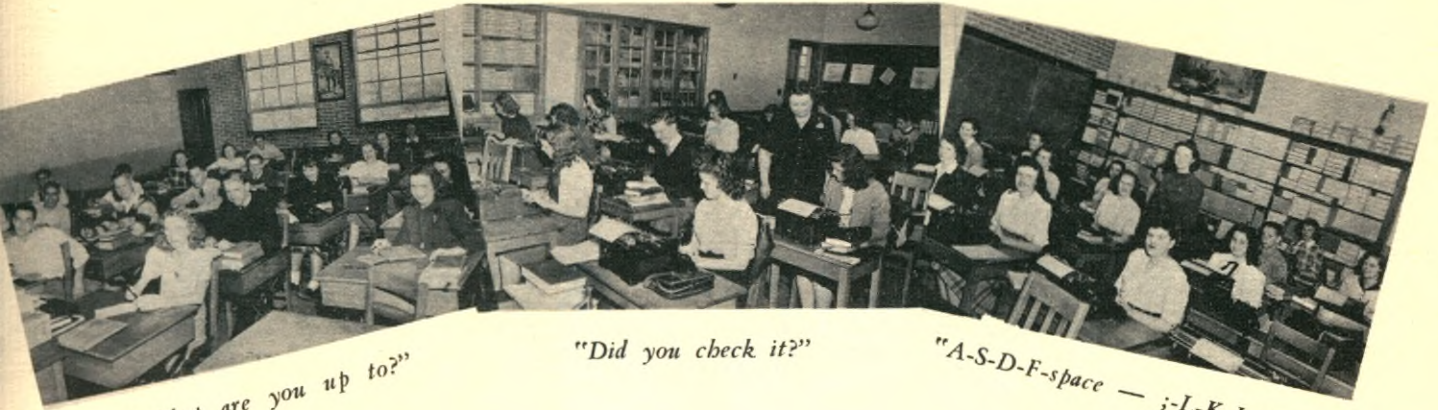


OLIVE LITTLEHALE, B.S.Ed.
Music Supervisor
Lowell State Teachers College



CHRISTINA N. SIMPSON, R.N.
Nurse
Lowell General Hospital
New York Polyclinic

We Remember...



"What are you up to?"

"Did you check it?"

"A-S-D-F-space — ;-L-K-J-space"



"I've probably said this before, but . . ." *". . . Easy, if you know the answers"* *"The square on the hypotenuse . . ."*



"Well, cla-a-ss, is that clear now?"

"In other words, to break that down for you . . ."

"Your assignment for tomorrow will be . . ."

CLASS OF 1948

MOTTO

Upward and Onward



Class Colors

MAROON AND SILVER

Class Flower

PEONY

Class Advisers

MARY P. MOGAN

HELEN R. POLAND

MURRAY B. HICKS



SENIORS



THOMAS VINCENT CANTARA
12 Amherst Street North Chelmsford

CLASS PRESIDENT

A.A. Member '44, '45, '46 School Delegate for Good Gov. Day
Band '44, '45, '46, '47 Junior Dance Committee
Football '45, '46, '47 Senior Dance Committee
Basketball '46, '47, '48 Annual Band Concerts '46, '47, '48
Baseball '47 Christmas Concerts '45, '46, '47

"I Hope The Band Keeps Playing"

Hails from North but frequents Center . . . looks exceptionally well in a football uniform . . . "Atom" . . . muscle man . . . likes bowling . . . waltz king . . . smooth but powerful.

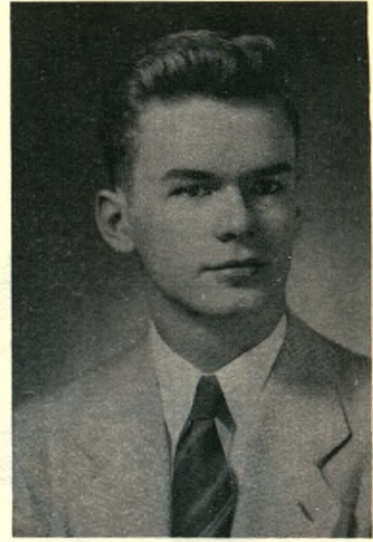
DOUGLAS LEONARD MacELROY
32 Billerica Street Chelmsford Center

CLASS SECRETARY

A.A. Member '44, '45, '46, '47 Junior Class Treasurer
Football '45, '46 Junior Red Cross '45
Football, Capt. '47 Junior Dance Committee '46
Basketball '47, '48 Senior Dance Committee '47
Baseball '47, '48 Glee Club Concert '44

"Take Me Out To The Ball Game"

"Cap" . . . Jack of all sports . . . authority on world problems . . . makes frequent visits to the Westlands . . . three star athlete . . . busy committeeman . . . baker's helper . . . sharp-shooter on the basketball court . . . good fellow.



RICHARD FRANCIS MEAGHER
78 Gorham Street East Chelmsford

VICE-PRESIDENT

A.A. Member '44, '45, '46, '47 Junior Dance Committee
Football '45, '46, '47 Senior Dance Committee
Class President '46 Intramural Basketball '46

"Going My Way"

"Ritchie" . . . quiet . . . slow to anger . . . gifted pianist . . . sense of humor, under it all . . . gridiron gladiator . . . takes studies casually . . . Westlands claims his leisure time . . . nice boy to know . . . host of friends.

JOAN ALICE HARTLEY
26 Sylvan Avenue Westlands

CLASS TREASURER

GRADUATION SPEAKER
A.A. Member '44, '45, '46, '47 Class Ring Committee
Junior Red Cross '45, '46, '47 Class Motto Committee
Junior Red Cross, Sec. '47 Senior Dance Committee
Glee Club '45, '46 Graduation and Reception Usher '47
Glee Club Concerts '45, '46 Yearbook Staff
Latin Club, Aedile '46, '47 Middlesex Women's Club Award '46
Glee Club, Treas. '46 D.A.R. Award '48

"Open the Door, Richard"

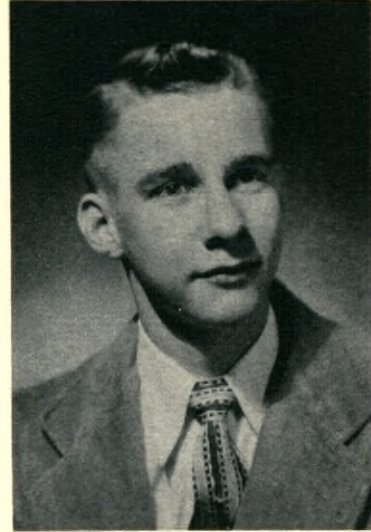
Petite, brunette and coquette . . . first honor student . . . marshal for class of 1947 . . . D.A.R. darling . . . struggling for driver's license . . . party hostess . . . sports the new look . . . college in September.





HAZEL JOAN ABRAHAMSON
 5 Cemetery Road West Chelmsford
 A.A. Member '44, '45, '46 Glee Club Concert '47, '48
 Junior Red Cross '45, '46 Year Book Staff
 Graduation and Reception Usher '47 Class Color Committee
 Glee Club '47, '48 Junior Dance Committee

"This Time It's Love"
 Dresden doll . . . sweet sophistication . . . Ice Follies candidate . . . fun-loving spirit . . . talent and skill galore . . . lovely coloratura voice . . . master of the typewriter keys . . . all the charm and ability of the model secretary.



ROBERT GEORGE ABRAHAMSON
 142 School Street West Chelmsford
 A.A. Member '44, '45 Junior Red Cross '44, '45
 Baseball '45, '46, '47, '48 Annual Band Concerts '46, '47, '48
 Band '45, '46, '47 Christmas Concerts '45, '46, '47
 Junior Dance Committee Senior Prom Committee

"Five Minutes More"
 Our rhythm man . . . Jackie's boy . . . takes life easy . . . runs for bus . . . daring fun maker . . . "I'm through with girls . . . slumbers through every period . . . devoted to cousin . . . inventor of superb excuses.

ARTHUR ALLAN ADAMS
 77 Turnpike Road Chelmsford Center
 A.A. Member '44, '45, '46, '47 Junior Red Cross '44, '45

"The Best Things In Life Are Free"
 "In My Merry Chevrolet" . . . Dick and Charlie are his pals . . . office boy . . . frequent trips to South . . . loves to dance with a certain girl . . . shopping with Charlotte . . . many a car in his past . . . skillful juggler of debits and credits . . . future pharmacist.

BARBARA JANE ADAMS
 41 Sherman Street North Chelmsford
 A.A. Member '45, '46 Class Color Committee
 Junior Red Cross, Treas. '45 Senior Prom Committee
 Junior Red Cross '44 Glee Club '45, '46, '47, '48
 Glee Club Concerts '45, '46, '47

"The Dickey Bird Song"
 Hails from North . . . one of four . . . "Auntie Barbs" . . . basketball enthusiast . . . who's in Nashua? . . . baby sitting . . . "by appointment please" . . . loves to talk . . . minstrel show participant . . . promising executive's secretary.





MARY JANE ALEXANDER
 11 Jensen Street Westlands
 Annual Band Concerts '45, '46, '47 Junior Red Cross '44, '45
 Basketball '45, '47 Softball, Capt. '47
 Intramural Basketball '46 A.A. Member '44, '45, '46, '47
 Band '44, '45, '46, '47

"Don't Fence Me In"
 Captain of the softball team . . . "Sluggo" . . . Mother's
 "Sweet Miss Mary" . . . models dungarees . . . attraction for
 electric fans, and how! . . . "Just look at my skirt!" . . .
 dashes merrily about . . . aspires to become a nurse.



MARY REGINA AVILA
 23 Graniteville Road North Chelmsford
 A.A. Member '44, '45, '46 Latin Club '46
 Junior Red Cross '44, '45, '46
 Graduation and Reception Usher '47

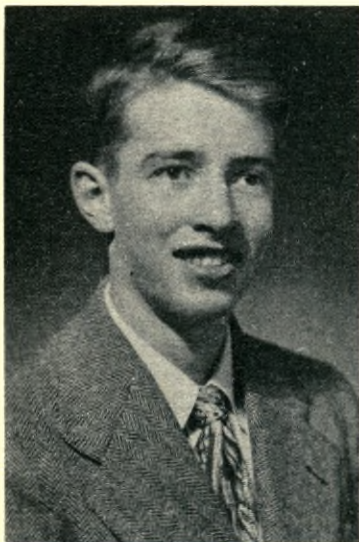
"Oh, What a Pal Was Mary"
 Good student . . . unassuming and friendly . . . member of
 the gang in room 21 . . . has such a good time in gym! . . .
 clever with a needle . . . "Oh, that sister of mine!"

GORDON LYSLE AXON
 52 Stedman Street Westlands
 A.A. Member '44, '45, '46 Baseball '47, Capt. '48
 Junior Red Cross '44

"Play Ball"
 "Axo" . . . long and lanky . . . scoops up grounders around
 second base . . . plays Church League basketball . . . drives his
 Dad's car . . . quiet . . . easy does it . . . fishes on occasion . . .
 headed for Lowell Textile Institute.

JOSEPH RALPH BELLEGARDE
 7 C Street Westlands
 A.A. Member '44, '45, '46, '47 Glee Club Concert '47
 Junior Red Cross '44, '45 Senior Hop Committee '47
 Glee Club '47

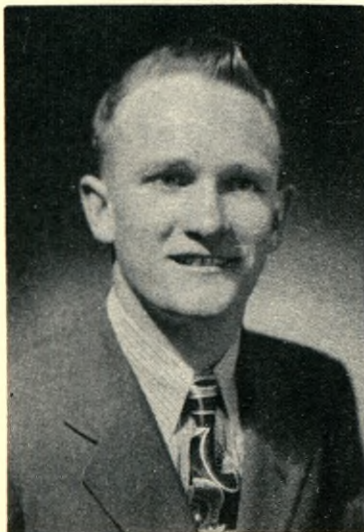
"I'd Rather Be Me"
 Office boy . . . argues heatedly . . . retires blushing . . . reti-
 cent grin . . . big businessman . . . always a push for the West-
 lands . . . class politician . . . future accountant.





BESSIE SUSANNE BLACKIE
 64 Parkhurst Road Chelmsford Center
 A.A. Member '45, '46, '47 Piano Concert '48
 Basketball, Co-Capt. '48 Junior Red Cross '45, '46
 Softball '46, '47 Junior Dance Committee
 Band '44, '45, '46, '47 Senior Dance Committee
 Annual Band Concert '45, '46, '47, '48 Yearbook Staff
 March of Dimes Concert '46, '47 Senior Prom Committee
 "Sincerely Yours"
 "Excellent sportswoman . . . a lover of horses . . . naturally wavy hair . . . dancing brown eyes . . . ready wit . . . clever seamstress with a fashionable wardrobe . . . class artist . . . drafted for all posters and Yearbook . . . enjoyable companion."

NELSON LINWOOD BRAKE
 4 Woods Street North Chelmsford
 A.A. Member '41 Senior Dance Committee
 Baseball '47
 Glee Club '47
 "I Got a Gal I Love"
 "Nellie" . . . baseball enthusiast . . . "See you at seven, Flo"
 . . . work dodger . . . baby sister to her baby sister . . . outdoor man . . . Tuesday night bowler . . . modern Izaak Walton . . . A.W.O.L.



EMILY MERRILL BOVILL
 Hall Road Chelmsford Center
 A.A. Member '44, '45, '46 Junior Red Cross '44, '45
 Glee Club '45

"Pretty As A Picture"
 "Bubbles" . . . friends galore . . . a champion of the Center . . . basketball star for Central Baptist . . . a blue ribbon baby sitter for little brother . . . a dancer par excellence . . . loves typing (?).

ELEANOR DAISY BROWN
 200 Groton Road North Chelmsford
 A.A. Member '44, '45, '46 Yearbook Staff
 Junior Red Cross '45, '46 School Pianist
 Pianist, Glee Club Concerts '45, '46, '47 Class Ode Committee
 Graduation and Reception Usher '47 Glee Club '45, '46, '47
 Chairman, Class Color Committee Junior Dance Committee
 Senior Dance Committee

"My Buddy"
 One of the Browns . . . talented pianist . . . becoming short coiffure . . . neat and accurate secretary . . . hearty laugh . . . "that's what buddy said" . . . shorthand and typing speed artist . . . versatile . . . sparkling personality . . . enjoys life . . . promises success.





ELEANOR RUTH BROWN
 281 Chelmsford Street Westlands
 Cheerleader '45 Class Color Committee
 A.A. Member '45, '46, '47 Glee Club '46, '47, '48
 Glee Club Concerts '46, '47, '48 Senior Prom Committee
 Junior Red Cross '44, '45, '46, '47

"Come Josephine in My Flying Machine"
 The other Brown . . . charming Miss from the Westlands . . .
 quiet and shy . . . perfect lady . . . blushes easily . . . tall and
 graceful . . . baby sitter now, telephone operator in the future
 . . . enjoys airplane rides.



LORAIN ELIZABETH BUCHANAN
 8 Groton Road North Chelmsford
 A.A. Member '44, '45, '46, '47 Junior Red Cross '44, '45

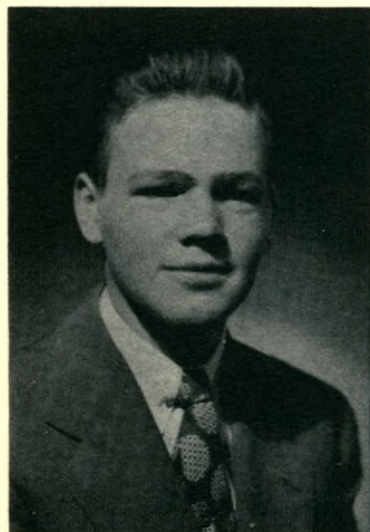
"My Heart Is a Hobo"
 Always missing the bus . . . happy-go-lucky . . . enviously
 bowling scores . . . "Aw gee, Mrs. Carriel, I can't do it" . . .
 good all-around sport . . . frequents Westland taxi . . . desires
 many a frappe in "Frosties."

JOHN CRAIG BURNS
 48 Stedman Street Westlands
 A.A. Member '44, '45, '46 Basketball, Mgr.
 Newswriting Group '46 Glee Club Concert '47
 Football '47 Junior Red Cross '44, '45, '46
 Baseball, Mgr. '47

"Down by the Ocean"
 Principal's son . . . lover of Latin (?) . . . basketball manager . . .
 has fun . . . girls and more girls . . . flair for news-writing . . .
 fights enthusiast . . . fondness for all kinds of dogs . . .
 Naval Reserve member . . . good-natured man.

PHYLLIS LENA BURROUGHS
 15 Clancy Street East Chelmsford
 A.A. Member '44, '45, '46 Intramural Basketball '46 '47
 Junior Red Cross '44, '45, '46 Softball '47
 Glee Club '46 Glee Club Concert '47

"Fishin' for the Moon"
 Quiet? Look again! . . . a diller, a dollar, a ten o'clock scholar
 . . . captain of her church's basketball team . . . everybody's
 friend . . . happy-go-lucky . . . enlivens a dull class . . . "Oh,
 Mr. Hicks!"





ELISABETH ANN BYAM
 8 Perham Street Chelmsford Center
 A.A. Member '44, '46 Glee Club '45
 Junior Red Cross '44, '45 Band Concert '45, '46, '47
 Band '44, '45, '46, '47

"I'll Get By"
 Pleasant manner . . . quiet in classes . . . dependable and courteous . . . plays the clarinet . . . takes care of little brother . . . a steadfast friend . . . seeks an R.N. after graduation . . . bound to succeed.



NICKOLAS STEPHEN CINCEVICH
 75 Dunstable Road North Chelmsford
 A.A. Member '44, '45 Junior Dance Committee
 Junior Red Cross '44, '45

"G'wan Home Your Madder's Collin"
 Future stone cutter . . . "tickets, please" . . . no interest in the fairer sex . . . good natured . . . a willing committeeman . . . loves pickles and dances . . . dependable and quiet type.

SHIRLEY ELIZABETH COLMER
 42 Stedman Street Westlands
 A.A. Member '44, '45, '46, '47 Glee Club '45, '46, '47
 Cheerleader '45, '46, '47 Glee Club Concerts '45, '46, '47
 Latin Club '46 Usher, Piano Fund Concert '47
 Junior Red Cross '44, '45, '46, '47 Intramural Basketball '46
 Junior Red Cross, Vice-Pres. '46
 Cheerleaders' Dance Committee '46, '47
 Reception Usher '47

"Ab, Sweet Mystery of Life"
 Forever averaging her marks . . . never minus a dance or a beau . . . summers in Maine . . . to teach kindergarten . . . a perfect lady . . . eager participator in every activity . . . cheerleader . . . she's the big noise at all the games!

JANE ELOISE CROSS
 North Road North Chelmsford

"Sunshine Avenue"
 Former Westford Academy basketball participant . . . blond lawyer-to-be . . . greets everyone with a smile . . . leaves Mr. Campbell speechless . . . senior newcomer . . . capable student . . . a sophisticate . . . plans college career.





THERESA LENORA DAIGLE
 5 Gay Street North Chelmsford
 A.A. Member '44, '45, '46 Glee Club '45, '46
 Junior Red Cross '44, '45, '46 Glee Club Concerts '45, '46
"Out of This World"
 Appreciates a joke . . . wears a friendship (?) ring . . . Terry
 and Jerry . . . enlivens room 2 . . . likes music allegro con
 spirito . . . a tease . . . charming saleslady . . . curly blond
 locks . . . clothes conscious.

ROBERT JAMES DESMARAIS
 99 Acton Road Chelmsford
 A.A. Member '44, '45, '46, '47 Intramural Basketball '46, '47
 Junior Red Cross '44, '45, '46, '47
"No Letter Today"
 "Squeaky" . . . hard worker at school and post office . . .
 motor bike speedster . . . special delivery . . . misogynist . . .
 friendly and quiet . . . hangs out with Eph and Johnny . . .
 never in trouble . . . sure of success.



ELEANOR ANNE DeGUISE
 451 Merrimack Avenue Dracut
 GRADUATION SPEAKER
 A.A. Member '44, '45, '46, '47 Cheerleader '47, '48
 Junior Red Cross '45, '46 Cheerleaders' Dance Com., '47, '48
 French Club '47 Yearbook Staff
 Latin Club '47 Class Ode Committee
 Graduation and Reception Usher '47
"Beautiful Lady"
 Winner of oratorical contest . . . ambitious and thorough stu-
 dent . . . expert seamstress . . . weekly letters to N.H.U. . . .
 poised and charming . . . activity conscious . . . every hymn a
 solo . . . proud prospects.

DANIEL WILLIAM DEXTER
 6 School Street West Chelmsford
 A.A. Member '44, '45 Harvard Book Club Award '47
 Junior Red Cross '45, '46 American Legion Scholarship Award '47
 Class Motto Committee *"Danny Boy"*
 Avid supporter of West . . . adventuresome experimenter . . .
 questions theories of scientists . . . blushes brightly . . . "still
 water runs deep" . . . loves hunting . . . sings bass in the church
 choir . . . rides motor bike . . . able student.





NORMA ELAINE DURRELL
 102 Middlesex Street North Chelmsford
 A.A. Member '44, '45 Graduation and Reception Usher '47
 Junior Red Cross '44, '45, '46, '47 Glee Club '45, '46, '47
 Yearbook Staff Glee Club Concerts '46, '47
 French Club '46

"Golden Earrings"
 "Ned" really enjoys classical music . . . extensive vocabulary . . . loves Connecticut, but dreams of sunny California . . . lovely voice . . . cinema fan . . . reads for pleasure . . . every hair in place . . . interested in psychiatry.



RITA MARGARET GONSALVES
 Carlisle Street East Chelmsford
 A.A. Member '44, '45 Junior Red Cross '44
 Band '45 Glee Club Concert '45, '46
 French Club '46 Sport Dance Committee '47
 Glee Club '45, '46 Senior Prom Committee
 Reception Usher '47

"Honey"
 Pretty little Miss from East . . . sparkling brown eyes . . . Izzy's chum . . . temperamental ideas . . . an efficient clerk in Bell's . . . pleasing personality . . . Guy Lombardo enthusiast . . . proud of her only brother.

EDITH MAY HALL
 124 Tyngsboro Road North Chelmsford
 GRADUATION SPEAKER
 A.A. Member '44, '45, '46, '47
 Graduation and Reception Usher '47
 Glee Club Concert '46, '47 Senior Dance Committee
 Latin Club, Aedile '46 Class Ode Committee
 French Club, Secretary '46 Yearbook Staff
 Junior Assembly '47 Senior Prom Committee

"Ob, How I Hate To Get Up In The Morning"
 Remembers Glee Club's trips to the Pops . . . mischievous eyes and infectious laugh . . . honor student . . . adores green . . . "Oo, la la" . . . movie frequenter . . . asset to nursing profession . . . only girl in family of seven . . . "Golden Voice."

DONALD ARTHUR HANKINSON
 Middlesex Road Tyngsboro
 A.A. Member '44, '45, '46, '47 Senior Dance Committee
 Band '44, '45, '46, '47 Piano Concert '48
 Annual Band Concerts '45, '46, '47, '48 Class Ode Committee
 French Club, Pres. '46 Yearbook Staff

"Say It With Music"
 Helpful Hank . . . Bernie's chauffeur . . . adds oompah to the band . . . a good student . . . as a future florist he might take to saying it with flowers! . . . Mr. Hick's Swanson . . . a regular fellow and a real gentleman.





THERESA LENORA DAIGLE
 5 Gay Street North Chelmsford
 A.A. Member '44, '45, '46 Glee Club '45, '46
 Junior Red Cross '44, '45, '46 Glee Club Concerts '45, '46
"Out of This World"
 Appreciates a joke . . . wears a friendship (?) ring . . . Terry and Jerry . . . enlivens room 2 . . . likes music allegro con spirito . . . a tease . . . charming saleslady . . . curly blond locks . . . clothes conscious.

ROBERT JAMES DESMARAIS
 99 Acton Road Chelmsford
 A.A. Member '44, '45, '46, '47 Intramural Basketball '46, '47
 Junior Red Cross '44, '45, '46, '47
"No Letter Today"
 "Squeaky" . . . hard worker at school and post office . . . motor bike speedster . . . special delivery . . . misogynist . . . friendly and quiet . . . hangs out with Eph and Johnny . . . never in trouble . . . sure of success.



ELEANOR ANNE DeGUISE
 451 Merrimack Avenue Dracut
 GRADUATION SPEAKER
 A.A. Member '44, '45, '46, '47 Cheerleader '47, '48
 Junior Red Cross '45, '46 Cheerleaders' Dance Com., '47, '48
 French Club '47 Yearbook Staff
 Latin Club '47 Class Ode Committee
 Graduation and Reception Usher '47
"Beautiful Lady"
 Winner of oratorical contest . . . ambitious and thorough student . . . expert seamstress . . . weekly letters to N.H.U. . . . poised and charming . . . activity conscious . . . every hymn a solo . . . proud prospects.

DANIEL WILLIAM DEXTER
 6 School Street West Chelmsford
 A.A. Member '44, '45 Harvard Book Club Award '47
 Junior Red Cross '45, '46 American Legion Scholarship Award '47
 Class Motto Committee
"Danny Boy"
 Avid supporter of West . . . adventuresome experimenter . . . questions theories of scientists . . . blushes brightly . . . "still water runs deep" . . . loves hunting . . . sings bass in the church choir . . . rides motor bike . . . able student.





NORMA ELAINE DURRELL
 102 Middlesex Street North Chelmsford
 A.A. Member '44, '45 Graduation and Reception Usher '47
 Junior Red Cross '44, '45, '46, '47 Glee Club '45, '46, '47
 Yearbook Staff Glee Club Concerts '46, '47
 French Club '46

"Golden Earrings"
 "Ned" really enjoys classical music . . . extensive vocabulary . . . loves Connecticut, but dreams of sunny California . . . lovely voice . . . cinema fan . . . reads for pleasure . . . every hair in place . . . interested in psychiatry.



RITA MARGARET GONSALVES
 Carlisle Street East Chelmsford
 A.A. Member '44, '45 Junior Red Cross '44
 Band '45 Glee Club Concert '45, '46
 French Club '46 Sport Dance Committee '47
 Glee Club '45, '46 Senior Prom Committee
 Reception Usher '47

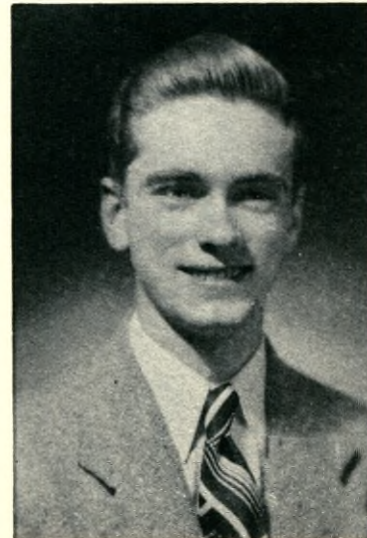
"Honey"
 Pretty little Miss from East . . . sparkling brown eyes . . . Izzy's chum . . . temperamental ideas . . . an efficient clerk in Bell's . . . pleasing personality . . . Guy Lombardo enthusiast . . . proud of her only brother.

EDITH MAY HALL
 124 Tyngsboro Road North Chelmsford
 GRADUATION SPEAKER
 A.A. Member '44, '45, '46, '47
 Graduation and Reception Usher '47
 Glee Club Concert '46, '47 Senior Dance Committee
 Latin Club, Aedile '46 Class Ode Committee
 French Club, Secretary '46 Yearbook Staff
 Junior Assembly '47 Senior Prom Committee

"Oh, How I Hate To Get Up In The Morning"
 Remembers Glee Club's trips to the Pops . . . mischievous eyes and infectious laugh . . . honor student . . . adores green . . . "Oo, la la" . . . movie frequenter . . . asset to nursing profession . . . only girl in family of seven . . . "Golden Voice."

DONALD ARTHUR HANKINSON
 Middlesex Road Tyngsboro
 A.A. Member '44, '45, '46, '47 Senior Dance Committee
 Band '44, '45, '46, '47 Piano Concert '48
 Annual Band Concerts '45, '46, '47, '48 Class Ode Committee
 French Club, Pres. '46 Yearbook Staff

"Say It With Music"
 Helpful Hank . . . Bernie's chauffeur . . . adds oompah to the band . . . a good student . . . as a future florist he might take to saying it with flowers! . . . Mr. Hick's Swanson . . . a regular fellow and a real gentleman.





LOIS RUTH HARNISH

255 Chelmsford Street Westlands
 A.A. Member '44, '45, '46 Reception Usher '47
 Glee Club '46, '47 Senior Dance Committee '47
 Glee Club Concerts '45, '46, '47 Junior Red Cross '44
 Band '44

"My Hero"

Rarely seen without Ray . . . aspires to a musical career . . . loves to dance . . . constant giggler . . . gay manner . . . when do we hear the wedding bells? . . . partial to redheads . . . oh! those dreamy eyes.



CLARENCE MILTON HEFLER

21 Oak Knoll Avenue East Chelmsford
 A.A. Member '44, '45, '46, '47 Junior Dance Committee
 Football '44, '45, '46, '47 Glee Club Concerts '44, '45, '46, '47
 Basketball '45, '46, '47 Senior Dance Committee
 Basketball, Capt. '48 March of Dimes Concert '46

"Fun and Fancy Free"

Captain "Muff" Hefler . . . native of East . . . singing Santa Claus . . . oh! for a car . . . frequents the Oaklands . . . longs to work for the B. & M. . . enjoys life . . . superb dancer . . . plays hockey in chemistry lab.

KATHLEEN ISABEL HODGSON

214 Graniteville Road West Chelmsford
 A.A. Member '44, '45, '46 Reception Usher '47
 Glee Club '46, '47 Senior Dance Committee
 Glee Club Concerts '46, '47

"K-K-K-Katie"

Lovely dimples . . . spirited worker . . . always heading for a card party . . . jovial smile . . . likes to take life easy . . . Rainbow enthusiast . . . P.A.D. (?) . . . capable Miss . . . of mischief, too . . . cinema fan.

NANCY ANN HUNT

101 Brick Kiln Road East Chelmsford
 A.A. Member '44, '45, '46 Dance Committee '47
 Reception Usher '47 Intramural Basketball '45, '46
 Basketball '47

"Sweet and Lovely"

Dainty . . . merry disposition . . . likes to dance . . . lively on the basketball court . . . lovely hair . . . aims to please . . . cooperative and sincere . . . blushes readily and smiles easily . . . short and sweet.





DORIS ROBERTA JOHNSON
 135 Main Street West Chelmsford
 GRADUATION SPEAKER
 A.A. Member '44, '45, '46 Memorial Day Assembly '45
 French Club Vice-Pres '46 Glee Club Concert '47
 Latin Club, Consul '46 Class Flower Committee
 Senior Assembly '47 Graduation Decoration Committee '47
 Junior Dance Committee '46 Graduation and Reception Usher '47
 Senior Dance Committee '47 Senior Prom Committee
 Glee Club '47

"A Twinkle in Your Eye"
 "Bobbie" . . . impish habitant of West . . . "Oh! Mr. Shannon, you pick on me." . . . happy-go-lucky . . . proud possessor of driver's license . . . personality plus . . . ability too . . . private secretary to MacElroy . . . new look.

LUCILLE MARIANNE LAGASSE
 39 Old Westford Road Chelmsford Center
 A.A. Member '44, '45, '46 Senior Dance Committee '47
 Cheerleader '45, '46 Glee Club Concert '45, '46
 Basketball '45 Junior Red Cross '44
 French Club '47 Senior Prom Committee
 Glee Club '45
 Junior Dance Committee '46

"Beautiful Dreamer"
 Favorite pastime is day dreaming . . . dances the latest steps . . . does justice to Vogue fashions . . . never troubles trouble . . . blushes easily . . . a cheery outlook on life . . . trim and tidy.



JEAN MARIE KILBURN
 302 Chelmsford Street Westlands
 A.A. Member '45, '47 Graduation and Reception Usher '47
 Glee Club Concert '46, '47, '48
 Junior Red Cross '44, '45, '46, '47

"I Have But One Heart"
 "Is this a test, Miss Maynard?" . . . enviable tresses . . . perpetual blush . . . neat dresser . . . enjoys the movies . . . fond of a senior . . . industrious worker . . . sincere and true friend.

JOANNE LORRAINE LAKIN
 10 Dartmouth Street North Chelmsford
 A.A. Member '45, '46, '47 Reception Usher '47
 Glee Club '45, '46 Junior Red Cross '44, '45, '46, '47
 Glee Club Concerts '45, '46 Senior Prom Committee

"I'm a Big Girl Now"
 Always with Barb and Jean . . . first on the bus daily . . . continuous smile . . . ready for fun . . . lunchroom chorister . . . frequently late for Period 3 . . . prefers black convertible.





ROGER ALAN LEWIS
 17 Central Square
 Chelmsford Center

A.A. Member '44, '45, '46, '47	Senior Dance Committee
Football '46, '47	Annual Band Concert '44
Junior Red Cross '45	Intramural Basketball '46
Freshman Member, A.A. Board	Christmas Concert '45
Band '44	Senior Prom Committee
Junior Dance Committee	

"I Haven't Got a Worry In The World"
 Laughing cavalier . . . smooth dancer . . . just loves English . . . famous for Friday night camping trips . . . Beau Brummel of Chelmsford High . . . always enjoys a good joke . . . has a preference for North . . . Dartmouth aspirant.



JEAN HOCKING LOGAN
 21 Cottage Row
 North Chelmsford

A.A. Member '45, '46, '47	Intramural Basketball '47
Glee Clubs Concerts '45, '46	Reception Usher '47
Newswriting Group '47	Glee Club '45, '46

"Stars in Your Eyes"
 Snapping brown eyes . . . "Come on, Jo!" . . . gum chewer . . . pretty hair . . . ladylike charm . . . proud of baby sister . . . aiming for her driving license . . . unobtrusive manner . . . hidden sense of humor . . . conscientious gal.

VIRGINIA LOIS LOGAN
 15 Grey Street
 North Chelmsford

A.A. Member '46	Glee Club Concert '46
Junior Red Cross '46	Intramural Basketball '47
Glee Club '46	

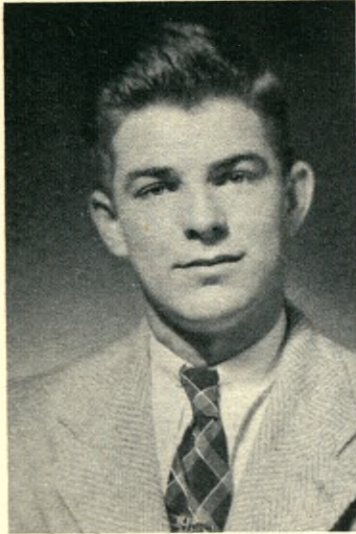
"Haunted Heart"
 Barbara's sidekick . . . Nashua interest . . . popular music fan . . . soft voice and gentle disposition . . . brown-eyed blonde . . . her weakness: frappes . . . allergic to gym . . . anticipates a career as hairdresser.

JOSEPH ROBERT McDONALD
 7 Marshall Street
 East Chelmsford

Band '44, '46, '47	A.A. Member '44
Football '47	Intramural Basketball '46
Football, Mgr. '46	March of Dimes Concert '44
Class Vice-President '46	Senior Prom Committee
Senior Dance Committee	
Annual Band Concert '44, '46, '47	

"The Dreamer"
 "Moon Man" . . . unassuming and modest . . . Egads, a girl! . . . wedded to his clarinet . . . blushes easily . . . doesn't know his own strength . . . Latin lover . . . always plugging for the band . . . enjoys the movies . . . helpful . . . longs to be a Boy Scout.





HENRY ROBERT McENANY
 12 Church Street North Chelmsford
 A.A. Member '45, '46 Glee Club Concert '45
 Intramural Basketball '45

"Lazy Mood"
 "Hank" . . . basketball coach for grammar school . . . crew cut . . . ideal ice man . . . Golden Gloves aspirant . . . naps in P.A.D. . . . Forge Village bound . . . wise cracker . . . terrific tease . . . economics expert.



JOHN WILSON McEVOY
 1 Gay Street North Chelmsford
 A.A. Member '44, '45, '46 Senior Dance Committee '47
 Junior Red Cross '44, '45, '46, '47 French Club '47

"Lazy Bones"
 "Muscles" . . . can sleep anywhere, in any position, in any class, through anything . . . handy with flowers . . . the small end of every argument . . . always going to get a job in Boston . . . affinity for mischief.

MARY LORRAINE MERCIER
 78 Middlesex Street North Chelmsford
 A.A. Member '46, '47 Glee Club '46 '47
 Junior Red Cross '46 Glee Club Concerts '46, '47

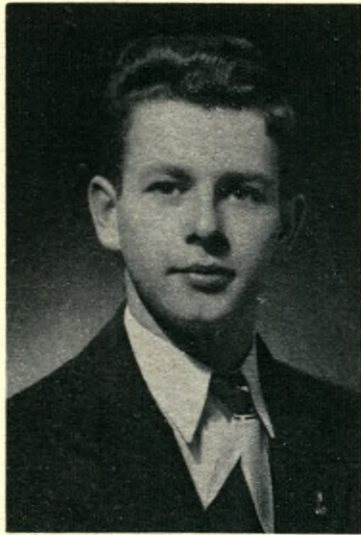
"Sweetheart Serenade"
 Joyous giggle . . . devoted sister to twin brothers . . . pretty, petite, and peppy . . . naturally curly tresses . . . a whiz on the dance floor . . . many male admirers . . . will brighten any office . . . "Lollypop."



RUSSELL WINN MERRILL
 2026 Middlesex Street North Chelmsford
 A.A. Member '44, '45, '46 March of Dimes Concert '44, '45
 Junior Red Cross '44, '45 Annual Band Concert '45, '46, '47, '48
 Basketball '48 Intramural Basketball '46
 Football '46, '47 Senior Dance Committee
 Band '44, '45, '46, '47

"You've Got to Be a Football Hero"
 "Rusty" . . . smooth basketball player . . . fast with a knife and fork and not bad at football either . . . drummer boy . . . destination unknown . . . believes in outlawing homework . . . physics his main sin of omission . . . does his good turn daily.





KENNETH MERRILL MILLER
 17 Washington Street North Chelmsford
 A.A. Member '44, '41, '46, '47 Senior Dance Committee '47
 Football '44, '45, '46, '47 March of Dimes Concert '44
 Basketball '47 Glee Club Concert '44
 Junior Red Cross '44, '45 Intramural Basketball '47
 Junior Dance Committee '46

"Nobody Knows The Troubles I've Seen"
 "Kenny" loves to argue . . . sports enthusiast . . . avid reader
 and born leader . . . practical joker . . . always teasing . . .
 models and sells reindeer sweaters . . . has his troubles . . . never
 on time for classes . . . yearning for medical career.

ALDEN HARRIS MILTON
 141 North Road Chelmsford Center
 A.A. Member '45, '46, '47 Junior Red Cross '45, '46, '47

"Who's Afraid of the Big Bad Wolf"
 Ice-cream man at Allard's . . . ladies' man . . . inquisitive . . .
 lanky six-footer from Connecticut . . . frantically searches for
 a seat on the morning bus . . . drives an old Dodge truck . . .
 braves the Lion in his Den.



JANE PATRICIA MILLS
 16 Westford Street Chelmsford Center
 A.A. Member '44, '45, '46 '47 Graduation & Reception Usher '47
 Glee Club Concerts '46, '47, '48 Glee Club '46, '47, '48
 French Club '47 Junior Red Cross '45, '46, '47, '48

"It's a Grand Night for Singing"
 Seen dashing about in a new convertible . . . songbird of our
 class . . . a faithful worker and cooperative student . . . big
 sister . . . a future nurse . . . chuckles betray a delightful
 sense of humor.

ELIZABETH GERTRUDE MINER
 110 Princeton Boulevard North Chelmsford
 A.A. Member '44, '45, '46, '47 Newswriting Group '46
 Glee Club Concerts '45, '46, '47 Jun. Red Cross '44, '45, '46, '47
 Glee Club '45, '46, '47 Senior Dance Committee '47
 Intramural Basketball '47 Reception Usher '47
 Senior Prom Committee

"Poppa, Don't Preach To Me"
 "Cuz" . . . at her best when chewing gum . . . lusty rooter
 . . . pint-sized mischief maker . . . forever dropping her com-
 pact . . . easy to get along with . . . wants to be a Wave . . .
 "Oh, Mr. Callagy."





WILLIAM MARSHALL MORTHAM
 74 Bridge Street Chelmsford Center
 A.A. Member '44, '45, '46, '47 Band '45
 Newswriting Group '47 Annual Band Concert '45

"A Merry Life"
 Broad grin . . . jolly . . . used to own a jalopy . . . always has a job . . . Latin student of distinction . . . blows a bugle for the benefit of a Lawrence drum corps . . . girls?? . . . allured by lumber business . . . "Timber!"



BARBARA MARIE MURPHY
 22 Brouillette Street North Chelmsford
 A.A. Member '44, '45, '46, '47 Reception Usher '47
 Glee Club '45, '46 Junior Red Cross '44, '45, '46, '47
 Newswriting Group, Treas. '46 Glee Club Concerts '45, '46
 Intramural Basketball '47 Senior Prom Committee

"Dark Eyes"
 Inhabitant of the City Line village . . . does she remember Hampton? . . . one of Joanne's gang . . . appreciates a good joke . . . known for her luncheon antics . . . always a pal . . . once, we understand, she was A.W.O.L.

ARTHUR EDWARD NORTON
 12 Woodlawn Avenue Westlands
 Football '45, '47 Junior Red Cross '44, '45, '46
 Intramural Basketball '47, '48
 A.A. Member '44, '45, '46

"Life Can Be Beautiful"
 Speaks mind freely . . . beautiful curly hair . . . Lowell bound . . . salty sailor at heart . . . time for romance . . . enjoys ease . . . school girl complexion . . . changeable moods . . . early departure (2 o'clock sharp) . . . frequent office visitor.

LOUIS ANTHONY OLIVER
 37 Princeton Street North Chelmsford
 A.A. Member '44, '45, '46, '47 Jun. Red Cross '44, '45, '46, '47
 Football '44, '45, '46, '47 Intramural Basketball '46, '47, '48
 Junior Dance Committee: Senior Prom Committee
 Senior Dance Committee

"I'll Dance At Your Wedding"
 "Louie" . . . smooth dancer . . . witty remarks and weird socks . . . allergic to neckties . . . 200 pounds of man . . . tall, dark, and handsome . . . all suburban guard . . . Buckwheat's big brother . . . refreshments in room 10 . . . universally popular.





THEODORE ALVARD OLSSON, JR.
 122 Dalton Road Westlands
 A.A. Member '44, '45, '46 Reception Usher '47
 Football '45, '46, '47 Junior Red Cross '44, '45, '46
 Class Motto Committee Intramural Basketball '47
 Baseball '48 Senior Prom Committee

"What'll I Do"
"Swede" . . . math wizard . . . gets all homework done . . .
 drives a new Studebaker . . . basketball at the "Y" . . . strong
 man . . . likes all sports . . . putters with radio, . . . electric-
 ity, and mechanical gadgets . . . a real pal . . . destination
 Northeastern.



MARGARET PALM
 10 Ideal Avenue Westlands
 Glee Club '47

"The Lady From 29 Palms"
"Margie" . . . newcomer . . . quiet? . . . always neat . . .
 extensive wardrobe . . . likes the movies . . . fond memories of
 Bridgeport . . . has a yen for society . . . courteous and genial
 manners . . . welcome addition to our class.

ROBERT PARLEE
 135 Pine Hill Road Chelmsford Center
 A.A. Member '44, '45, '46, '47

"Stout Hearted Men"
 Toni home permanent . . . hunter, trader, trapper . . . out-
 door man . . . drives new Nash . . . currently unprepared in
 current events . . . "What's the question, Mr. Campbell?" . . .
 McHugh's chauffeur . . . endows high school with crows and
 ducks.

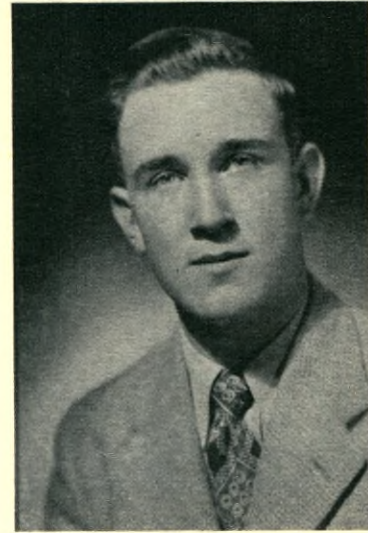
AINSWORTH CARL PEDERSEN
 160 Concord Road Chelmsford Center
 A.A. Member '47 Intramural Basketball '46, '47
 Junior Varsity Basketball '47

"The Blond Sailor"
 Navy bound . . . always ready to sing . . . genius of Period
 2 . . . especially shy about tall girls . . . anything for an argu-
 ment . . . avoids exertion . . . snappy bow ties . . . numerous
 friends and followers.





BEVERLY ADAMS PICKARD
 15 Perham Street Chelmsford Center
 A.A. Member '44, '45, '46 Senior Prom Committee
"The Waltz You Saved For Me"
 Conspicuously quiet . . . career uncertain . . . Betty's chum
 . . . frequents the Old Timers' Dances . . . Center booster . . .
 sits in Room 10 . . . sweet and demure . . . a wee, small voice
 . . . Baptist church hoopster.

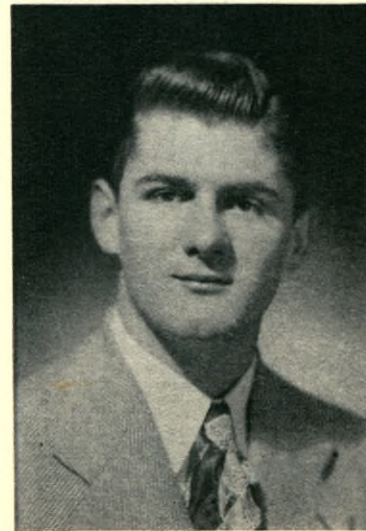


RAY PIKE, III
 46 Westford Street Chelmsford Center
 Band '44, '45, '46, '47 Piano Fund Concert '48
 A.A. Member '44, '45, '46, '47 French Club '46
 Annual Band Concert '45, '46, '47, '48 Football '45
 March of Dimes Concert '46, '47 Yearbook Staff
"How Soon"
 Bound for University of New Hampshire . . . really works
 at playing the baritone horn . . . drives a hard bargain with
 teachers . . . jumps at the chance to duck homework . . . a
 future veterinarian.

THOMAS HENRY RANDALL
 308 Billerica Road Chelmsford Center
 A.A. Member '47 Intramural Basketball '47, '48
 Junior Dance Committee Junior Varsity Basketball '47
 Senior Dance Committee Senior Prom Committee
 Class Ode Committee
"Hymoresque"
 Author of "The Randall Story" et cetera . . . goes with a
 little miss from the Westlands . . . always asks for a second
 explanation . . . writes his own unique brand of poetry . . .
 gentlemanly manners.



WILLIAM LESLIE REID
 110 Park Road South Chelmsford
 A.A. Member '44, '45, '46, '47 Junior Dance Committee
 Football '46, '47 Student Representative for A.A. Committee
 Baseball '45, '46 Intramural Basketball '47
 Yearbook Staff
"Hi, Neighbor"
 Needs no introduction . . . ace football player . . . A.A.
 representative . . . maintains South is the best part of town . . .
 disagrees with Mr. Callagy and the text in economics! . . . en-
 phant for broken bones.



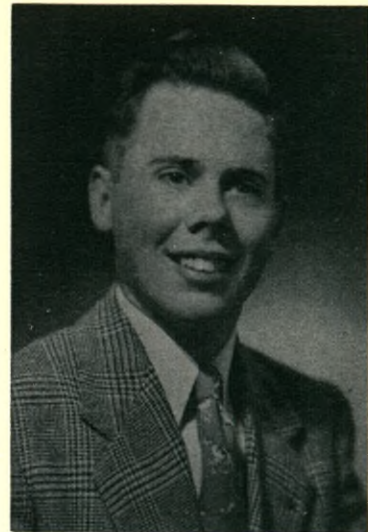


BROOKS BRADFIELD RILEY
 26 Grove Street Lowell
 A.A. Member '44, '45 Band '47, '48
 Junior Red Cross '44, '45

"The Secretary Song"
 "Brookie" . . . wavy hair . . . appreciates a good joke . . .
 easy going . . . featherweight . . . girl shy?? . . . solemn-
 faced clown . . . apt typist . . . loves ice cream . . . guardian
 of his little brother . . . Burdett bound!

FERN AMANDA SCOBLE
 Wildwood Street Westlands
 A.A. Member '44, '45, '46, '47 Intramural Basketball '46
 Junior Red Cross '44, '45 Senior Prom Committee
 Softball '46

"Ya-la-la, Ya-la-la"
 Promptly delivers daily office reports . . . chatterbox . . .
 delights in happy atmosphere of Kydd's . . . enthusiastic soft-
 ball player . . . my brother "Hubie" . . . Gibson girl style . . .
 gentle and affable . . . promising secretary.



ROBERT VERSAL ROBEY
 59 Billerica Road Chelmsford Center
 A.A. Member '44, '45, '46, '47 March of Dimes Concert '45, '46
 Band '44, '45, '46, '47 Glee Club Concert '47
 French Club '47 Senior Prom Committee
 Annual Band Concerts '45, '46, '47, '48
 Senior Dance Committee '47

"Heartbreaker"
 A-1 trumpeter and band member . . . careful driver . . .
 knows some pretty good jokes . . . frequents mountains . . .
 camera fan . . . former Lowell office boy . . . skiing . . . al-
 ways ducking gym period 2 . . . full of business . . . Sunday
 gait.

JOAN WHITNEY SHEA
 118 Boston Road Chelmsford Center
 A.A. Member '45, '46 Junior Dance Committee '46
 Latin Club, Consul '46 Senior Dance Committee '47
 French Club '46 Class Motto Committee
 Class Secretary '46 Graduation Decoration Committee '47
 Graduation and Reception Usher '47 Mem. Day Assembly '45
 Senior Prom Committee

"Aren't You Glad You're You"
 Erudite classmate . . . fourth year Latin student . . . dark-
 haired colleen . . . appreciates a joke . . . smart clothes . . .
 ladylike charm . . . genial ticket taker . . . future doctor . . .
 Smith or Radcliffe . . . clever career awaits her.





MARY JOYCE SHEA
 138 Main Street West Chelmsford
 A.A. Member '46 Junior Dance Committee
 French Club '46 Senior Prom Committee
 Latin Club '46

"Memories"

Misty dark hair and eyes . . . photogenic and pleasing miss . . . models the latest in blouses . . . dotes on Shakespeare . . . delights in watching basketball games . . . amicable addition to our senior year.



ISABELLE FRANCES SOUSA
 115 Gorham Street East Chelmsford
 A.A. Member '44, '45, '46 French Club '46
 Junior Red Cross '44 Sport Dance Committee '47
 Band '45 Leap Year Dance Committee '47
 Graduation Decoration Committee '47 Glee Club '45
 Intramural Basketball '47

"Personality"

"Izzy" . . . overflowing with energy . . . life of the lunch-room . . . natural curls and wit . . . swell sport . . . contagious giggle . . . Rita's pal . . . causes near riots in period 3 . . . green eyes . . . scads of friends . . . Who is Tony?

BETTY ELLEN STEWART
 7 Sherman Street North Chelmsford
 A.A. Member '44, '45, '46 Glee Club Concerts '45, '46, '47
 Basketball '46, '47 Senior Prom Committee
 Senior Dance Committee '47
 Glee Club '45, '46, '47

"Home On The Range"

A cheery smile for everyone . . . loves horses . . . dreams of a dude ranch . . . a great attraction for music . . . appreciates a good joke . . . "Oh, that history!" . . . cooking is her hobby.

WALTER PAUL SULLIVAN
 19 Westland Avenue Westlands
 A.A. Member '44, '45, '47 Senior Dance Committee '47
 Football '47 Junior Red Cross '44, '45, '46, '47
 Senior Prom Committee

"I'll Be Down To Get You In A Taxi, Honey"

Never lost an argument . . . never overworked . . . jovial outlook on life . . . tempted to sleep through physics . . . drives a taxi for business and pleasure . . . appreciative observer of feminine pulchritude . . . many friends.





ELMER GARFIELD SWANSON JR.
 208 Dalton Road Chelmsford Center
 A.A. Member '45, '46, '47 Band '45, '46, '47, '48
 Annual Band Concerts '45, '46, '47 March of Dimes Concert '46
 Junior Dance Committee '47

"Baby Face"
 Comedian, vest pocket size . . . hails from the Westlands . . .
 toots the clarinet in the band . . . goes dancing every Friday
 . . . a perennial in junior English . . . determined to take it
 easy.



DOLORES MARIA TOEGEMANN
 64 Richards Street Lowell
 A.A. Member '46 Senior Dance Committee '47
 Glee Club Concerts '46, '47 Cheerleaders' Dance Com. '47, '48
 Cheerleader '47 Hick Hop Dance Committee '47
 Intramural Basketball '46 Graduation Decoration Com. '47
 Reception Usher '47 Senior Prom Committee

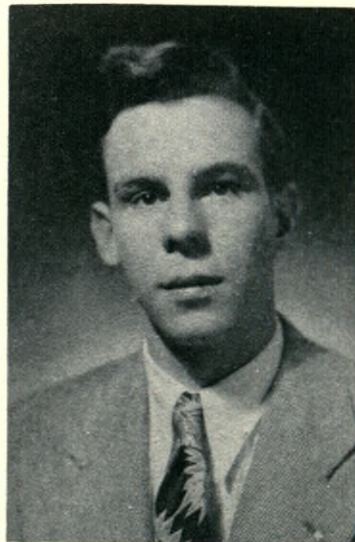
"Look For The Silver Lining"
 Always cheerful . . . trusted confidante . . . prefers the
 Navy . . . one of our few commuters . . . likes a good physics
 joke . . . imaginative . . . "But, Mr. Hicks" . . . turns farmer
 in the summer . . . wants little, gives a lot . . . future nurse.

KENNETH EDMUND VINAL
 15 Highland Avenue North Chelmsford
 A.A. Member '43, '44, '45, '46 Jun. Red Cross '44, '45, '46, '47

"Oh, Johnny" (Kenny)
 Pink and white complexion . . . ski cap . . . dry land sailor
 . . . deMolay . . . serenaded every morning on the bus . . . dry
 humor . . . carries books for a young lady . . . good dancer
 . . . hard worker on hardware (?).

GUY NELSON WHITWORTH, JR.
 169 Chelmsford Street Westlands
 A.A. Member '43, '44, '45, '46 Intramural Basketball '47
 Junior Red Cross '43, '44, '45 Senior Prom Committee

"My Heart's In The Highlands"
 "Well!" . . . cake sampler . . . fond of chocolate Easter
 eggs . . . Bell Shop is his favorite hang out . . . shines in math
 (?) . . . class clown . . . appreciates high school drinking
 fountains . . . seen in many a dance hall . . . disdains buses
 . . . the walking man.





BARBARA ANN WYLIE
 16 Gorham Street East Chelmsford

GRADUATION SPEAKER

A.A. Member '44, '45, '46	French Club '46
Junior Red Cross '44, '45,	Glee Club '45, '46, Vice Pres. '47
Junior Assembly '47	Glee Club Concerts '46, '47
Yearbook Staff	Graduation and Reception Usher
Basketball '47, '48	Newswriting Group '46
Cheerleader '45, '46, '47	Chairman Ring Committee '46
Latin Club '46, Aedile '47	Senior Dance Committee

"Pal of Mine"

Consistently A student . . . cheerleader of renown . . . Ken-
 ny's girl . . . efficient on the basketball court . . . "Say!" . . .
 loves math 2A . . . A plus popularity rating . . . strawberry
 blonde . . . willing worker . . . all around good sport.

Upward and Onward

Upward to hail that season
 By gifted seers foretold,
 When men shall rule by reason
 And not alone by gold.
 When with man to man united
 And every wrong thing righted
 The whole world shall be lighted
 As Eden was of old.

Onward for those who love us,
 For those who know us true,
 For the Heaven that smiles above us
 And inspires our spirits too.
 For the course that lacks assistance
 For the wrong that needs resistance
 For the good that pleads existence
 Let us see what we can do!

—Robert Robey, '48

Upward and Onward

The tree that never had to fight
Upward for sun and air and light,
That stood out in the open plain
And always got its share of rain
Never became a forest king,
But lived and died a scrubby thing.

The man who never had to toil,
Or dig the ground, or plant the soil,
Who lived a life of ease and pleasure
And without earning got his treasure
Never became a manly man
But died as dwarfish as he began.

In tree or man good timber grows
Where thickest gather earthly woes.
Both men and trees must fight their way
Upward and onward, or weaklings stay,
For the grain of wood grows strong in storm,
And the soul of man his trials form.

Jane Mills, '48



UNDERGRADUATES



Class of 1949

President	James Buzzell, Jr.
Vice-President	Warren McHugh
Treasurer	Edward Bishop
Secretary	Betty Clark

Adams, Doris
 Barrows, Barbara
 Beausoleil, Doris
 Bishop, Maureen
 Blott, Margaret
 Buonopane, Edward
 Campbell, John
 Carr, Marjorie
 Cashin, Charles
 Clough, Marilyn
 Colby, Phyllis
 Cole, Muriel
 Crowell, Virginia
 Cummings, Dorothy
 Curran, Christine
 Curtis, Nancy
 Dexter, Lincoln
 Dinnigan, Walter
 Dryden, Joyce
 Ducharme, Joan
 Dupee, Phyllis
 Durkee, Elizabeth
 Dutton, Claire
 Edwards, William
 Falardeau, John
 Flynn, Patrick
 Gadbois, Lorraine
 Gannon, Elizabeth

Gaudette, Victor
 Gibbons, Raymond
 Gonsalves, Theresa
 Greenwood, Constance
 Guiney, John
 Hadley, Richard
 Hamel, Ruth
 Hardy, Elizabeth
 Hayes, Marie
 Hayes, Theresa
 Hayward, Richard
 Hulslander, Irene
 Jenkins, Margaret
 Kelly, Chester
 Lamb, Nancy
 Leach, Ronald
 Lebrun, Harold
 Leo, Concetta
 Letteney, Ward
 Lind, Clark
 Logan, Ralph
 Mann, Joyce
 Marshall, John
 McDonald, Rita
 McMaster, Beverly
 Miller, Arthur
 Mills, Ann
 Nadeau, Barbara

Nilsson, Elsa
 Norton, Robert
 Palmgren, Phyllis
 Petterson, Evelyn
 Peverill, Louise
 Pihl, Roger
 Pope, Rita
 Reid, Donald
 Rose, Hazel
 Russon, Jean
 Sargent, Sybil
 Scrizzi, Dawn
 Shea, Nancy
 Shedd, Thomas
 Spans, John
 Staveley, Doris
 Staveley, Guy
 Sweet, Patricia
 Valentine, Fay
 Vayo, Paul
 Welch, George
 Wilder, Elizabeth
 Williams, Raymond
 Wright, Charles
 Young, Alva
 Zabierek, Eugene
 Zouzas, Paul

Class of 1950

Abrahamson, Jane
Adams, Janet
Avila, Louise
Bailey, Joyce
Barron, George
Bartlett, Virginia
Bomil, Janet
Bonura, John
Bovill, Barbara
Brooks, Lois
Brown, Evelyn
Burne, Philip
Burne, Richard
Burton, Lorna
Burton, Sylvia
Burt, Carolyn
Carlson, Edward
Chagnon, William
Clarke, David
Cochrane, Beverly
Costello, John
Courchaine, Ronald
Croft, Joan
Daigle, Dorothy
Dale, Joan
Delorey, William
DiRuzza, Clara
Donovan, Dana
Ducharme, Barbara
Edwards, John
Eliassen, Donald
Elwood, Robert
Elwood, Ronald
Emanouil, Georgia
Forest, Norman
Foster, Gertrude
Gadbois, Pauline
Gaudette, James
Gervais, Alexander
Gervais, Jean
Guerrero, Joan
Hildreth, Nancy
Hollingworth, Joseph Jr.
Howard, Richard
Johnson, Edla
Kerrigan, James
Kilburn, Barbara
Lakin, Marjorie
Leaver, Richard
L'Ecuyer, Elmer

Lemay, Dolores
Lovering, Dorothy
Lovering, Priscilla
MacDonald, Ruby
MacElroy, Robert
Mackey, Charles
Mainville, Omer
Malloy, Malcolm
McHugh, Richard
Molloy, Barbara
Moore, Loretta
Moss, Mildred
Noel, Irene
Oliver, Vincent
Page, Robert
Parker, Lester
Parkhurst, Fred
Pedersen, Shirley
Pelletier, George
Petterson, Sally
Pickard, Carol
Pickard, Donald
Poland, Janice
Pomeroy, Connie
Proulx, Roger
Reeves, Evelyn
Reis, Allan
Roberts, Joan
Rose, Edna
Sanderson, Jean
Shawcross, Gail
Sherman, William
Sidelinger, Jacqueline
Simpson, Dorothea
Simpson, Jacqueline
Smith, Robert
Spinazola, Mary
Talty, Ronald
Tansey, James
Tousignant, William
Ullom, Marilyn
Warren, Martha
Waterman, Shirley
Watt, Marilyn
White, Robert
Wright, Florence
Yates, Stuart
Zaher, Charles
Zouzas, Elizabeth

Class of 1951

Adams, Ralph
Anderson, Richard
Ayotte, Claire
Ayotte, Lucille
Bailey, Ruth
Ballinger, Anne
Beaubien, Roland
Bell, Roberta
Bernard, Lorraine
Bicknell, Roger
Bishop, Robert
Blackie, Anne
Blott, Shirley
Bomil, Betty
Branch, Carol
Brodeur, Henry
Brown, Richard
Burke, Nancy
Carbonneau, Cecile
Carlin, Bruce
Carlson, Raymond
Carruthers, Robert
Chambers, Donald
Cody, Blanche
Collinge, Donald
Corfield, Frederick
Coughlin, Margaret
Cummings, Constance
Curran, Alice
Davis, Richard
DeSilvio, Louis
Dinnigan, Charlotte
Dulgarian, Stephen
Emanouil, Timothy
Farrington, Dorcas
Flavell, Eileen
Geary, Nancy
Gray, Wayne
Grondine, Theresa
Haberman, Allan
Hamel, Joan
Hardy, Raymond
Harrington, Kathleen
Hatch, George
Henderson, Joan
Henderson, Mable
Hicks, William
Hoyle, Richard
Hoyt, Eleanor
Jones, Barbara
Karafelis, James
Kelly, Harold
Kydd, Robert
Leaver, Donna
LeBrun, Florence
Mann, Isabelle
Manseau, Thomas
Marchand, Omer
Marcotte, Estelle
Matton, Rita
McCaffrey, Jean
Merrill, David
Mullen, Richard
Oates, Carole
Oczkowski, Edward
Oczkowski, Fred
O'Neill, Michael
Osborn, Carol
Ouellette, Joseph
Parlee, Henry
Peckham, Fenner
Peverill, Dorothy
Peverill, Laura
Pickard, Ann Louise
Pickard, Ronald
Pihl, Daniel
Pivrotto, Richard
Polewarczyk, Valenty
Proulx, Shirley
Reynolds, Sheila
Riley, Robert
Shepherd, George
Shuhany, Andrew
Stott, George
Suich, Peter
Sweet, Janet
Taylor, Milton
Tibbetts, Charlotte
Toms, Patricia
Tremblay, John
Valentine, Albert
Vennard, Elizabeth
Vennard, Thomas
Vinal, Harold
Wallis, Thelma
Warren, Fred
Wetherbee, George
Wheeler, Doris
Wyman, Eleanor
Yoachimciuk, William
Ziemba, Florence



Class of 1947

The following is a list of the special awards presented at the graduation exercises, June 11, 1947. Inasmuch as these awards were not made until the night of graduation, it was impossible to record them in the 1947 Yearbook.

AWARDS:

Boys' State—A week at Massachusetts State College at Amherst — given by the American Legion, Post 212, to the highest ranking boy in the Junior class — awarded to DANIEL WILLIAM DEXTER.

The Harvard Club Book—"The Happy Profession" by Ellery Sedgwick — given by the Harvard Club of Boston to that boy in the college preparatory course of the Junior class for high scholarship and character — awarded to DANIEL WILLIAM DEXTER.

Perfect Attendance—Neither absent, tardy nor dismissed for four years — EARL JAMES NICKERSON.

Reader's Digest—A complimentary subscription to the Reader's Digest for one year to the Valedictorian of the Class of 1947—DOROTHY ARLENE NYSTROM.

Washington and Franklin Medal Award—Presented by the Massachusetts Society of the Sons of the American Revolution given for excellence in the study of United States History as determined by competitive examination — awarded to HECTOR JOSEPH McDONALD, JR.

Good Citizenship Certificate—Presented by the Daughters of the American Revolution for outstanding qualities of dependability, leadership, service and patriotism — awarded to DOROTHY ARLENE NYSTROM.

English Prize—A purse of \$25 given by the North Chelmsford Parent-Teachers' Association for excellence in the study of English as determined by competitive examination — awarded to HECTOR JOSEPH McDONALD, JR.

Dunigan Award—Given by the Chelmsford Teachers' Organization in loving memory of Hilda B. Dunigan, who taught in Chelmsford High School, from 1928 to 1934, for excellence in shorthand and typewriting as determined by competitive examination — awarded to DOROTHY ARLENE NYSTROM.

Gay Award—Given by the Chelmsford Teachers' Organization in loving memory of Dorothy F. Gay, who taught in Chelmsford High School from 1932 to 1934, for excellence in French as determined by competitive examination — awarded to HECTOR JOSEPH McDONALD, JR.

Fogg Award—Given by the Chelmsford Teachers' Organization in loving memory of Donald H. Fogg, who taught in Chelmsford High School from 1940 to 1943, to the highest ranking senior girl who has earned a letter in major sports — awarded to ABBY MILLS VONDAL.

Knightly Award—Given by the Chelmsford Teachers' Organization in loving memory of George R. Knightly, who was a teacher and coach in Chelmsford High School from 1930 to 1943, to the highest ranking senior boy who has earned a letter in major sports — awarded to HECTOR JOSEPH McDONALD, JR.





Cheerleaders

This year Chelmsford sport fans were thrilled by the spectacle of twenty-four cheerleaders in red and black velvet uniforms. Coached by the capable and peppy Miss Hehir into a snappy and well-drilled team, they were an impressive part of every athletic contest. Captain Janet Bomil led the group, assisted by the sub-captains, Fay Valentine and Rita McDonald, and by the remarkable little mascot, Dottie Ayotte.

Our cheerleaders functioned at every football and every basketball game, and concluded their season by entering the cheerleaders' tournament at Littleton, where they received honorable mention for their pyramid, conga line, and locomotive cheers.

Each cheerleader was awarded a letter.



Football

The law of averages seems to apply even to athletic success, and certainly the Chelmsford High School football squad has proved no exception to this rule. After tying our first game with Punchard, we immediately ran afoul of bad breaks of all kinds. Many times we came close to victory, but when our hopes were highest, fate slammed the door, and we never quite achieved the desired end.

Captain Douglas MacElroy, who turns the controls over to Bruce Campbell, Captain-elect for '48, feels confident that with the aid of the many underclassmen who are returning, next year's squad will turn the tables, and with their renewed efforts and valuable experience, change bad luck into good.

The scores:

CHELMSFORD		OPPONENT	
Chelmsford	6	Punchard	6
Chelmsford	6	Johnson	19
Chelmsford	13	Tewksbury	26
Chelmsford	0	Dracut	12
Chelmsford	0	Maynard	9
Chelmsford	7	Pinkerton	26
Chelmsford	13	Weston	27
Chelmsford	6	Concord	33
Chelmsford	6	Howe	13



Girls' Basketball

Our girls' basketball team, captained by capable Nancy Lamb and Bessie Blackie, reported this season to our new and faithful coach, Miss Margaret Keith. As several veterans were on the squad, the prospects for a successful season were evident.

From the first day we were determined to uphold the record of previous Chelmsford teams. Our determination was greatly boosted when we, at long last, appeared on the court with the new look!

Our first league defeat came when we journeyed to Johnson. We bounded back from the blow, however, to defeat each contender in its turn. It was in the postponed Tewksbury game that we copped the Suburban League crown. This is the fourth straight year that the Chelmsford girls have carried off this honor. We were a tired team that bowed to our rival, Howe, in the final game.

Our entry at the Littleton tournament ended in a two point loss after a thrilling game with Townsend.

At a post-season squad meeting, Maureen Bishop and Connie Greenwood were elected to lead next year's team.

The scores:

<i>Chelmsford</i>	<i>Opponents</i>	<i>Chelmsford</i>	<i>Opponents</i>
Chelmsford 24*	Wilmington 8	First team 19*	Concord 9
Chelmsford 19*	Alumnae 30	Second team 15*	Concord 11
First team 25*	Concord 24	Chelmsford 18	Pinkerton 17
Second team 35*	Concord 11	Chelmsford 26	Dracut 10
Chelmsford 32	Dracut 3	Chelmsford 38	Burlington 31
Chelmsford 20	Johnson 25	Chelmsford 29	Howe 26
Chelmsford 14	Tewksbury 10	Chelmsford 17	Pinkerton 11
Chelmsford 31	Burlington 17	Chelmsford 25T	Townsend 27
Chelmsford 20	Johnson 13	Chelmsford 19	Tewksbury 17
		Chelmsford 23	Howe 27

* Non-league games

T Tournament game



Boys' Basketball

Chelmsford High School's basketball team managed another successful season, as the boys played themselves into two tournaments, and won second place honors in the Suburban League. The squad holds victories against every team in the Suburban League, excepting only Dracut, and it left an impressive record whenever it took the floor.

This year's Captain, Clarence Hefler, and the team's seniors are leaving behind a firm nucleus of underclassmen to be developed next season under the leadership of Warren McHugh. They should present another well moulded team by the time Coach Hicks has them whipped into shape for the opening game next year.

The scores:

<i>Chelmsford</i>	<i>Opponents</i>	<i>Chelmsford</i>	<i>Opponents</i>
Chelmsford 48	Maynard 25	Chelmsford 52	Johnson 30
Chelmsford 54	Wilmington 15	Chelmsford 22	Pinkerton 53
Chelmsford 39	Alumni 23	Chelmsford 23	Dracut 44
Chelmsford 41	Methuen 44	Chelmsford 45	Burlington 26
Chelmsford 23	Maynard 31	Chelmsford 33	Howe 23
Chelmsford 24	Dracut 25	Chelmsford 41	Pinkerton 49
Chelmsford 37	Johnson 22	Townsend	
Chelmsford 46	Tewksbury 15	Tourney 62	Ayer 33
Chelmsford 18	Methuen 28	" 33	Milford 47
Chelmsford 49	Burlington 41	Small School	
		Tourney 37	Concord 45
		" 32	Tewksbury 38



Baseball

Season's Schedule:

April 13	Westford at Chelmsford
April 20	Chelmsford at Johnson
April 23	Chelmsford at Wilmington
April 27	Chelmsford at Howe
May 1	Dracut at Chelmsford
May 4	Chelmsford at Tewksbury
May 7	Chelmsford at Methuen
May 11	Chelmsford at Punchard
May 14	Johnson at Chelmsford
May 18	Wilmington at Chelmsford
May 21	Howe at Chelmsford
May 28	Tewksbury at Chelmsford
June 1	Methuen at Chelmsford
June 4	Punchard at Chelmsford

Squad Members:

Axon, Gordon, Capt.
 Bishop, Edward
 Campbell, John
 Carlson, Raymond
 Carruthers, Robert
 Chagnon, William
 Clarke, David
 Davis, Richard

Dinnegan, Walter
 Hollingworth, Edwin
 Kerrigan, James
 Leach, Ronald
 L'Ecuyer, Elmer
 Logan, Ralph
 MacElroy, Douglas
 Malloy, Malcolm

Marchand, Omer
 Pickard, Donald
 Polewarczyk, Valenty
 Taylor, Milton
 Tousignant, William
 Yoachimciuk, William
 Manseau, Thomas, Mgr.
 Ouellette, Victor, Mgr.

Athletic Awards

During the school year the following awards were made:

Football

Bishop, Edward
Buzzell, James
Campbell, John
Cantara, Thomas
Collinge, Donald, Mgr.
Falardeau, John
Hayward, Richard
Hefler, Clarence
Hodgkinson, Fred
Kelly, Chester
Kerrigan, James
Lewis, Roger
MacElroy, Douglas, Capt.
Malloy, Malcolm, Mgr.
McDonald, Robert
McHugh, Warren
Meagher, Richard
Merrill, Russell
Miller, Kenneth
Oliver, Louis
Olsson, Theodore
Reid, William
Spanos, John
Sullivan, Walter

Boys' Basketball

Cantara, Thomas
Hayward, Richard
Hefler, Clarence, Capt.
Kydd, Robert
MacElroy, Bruce
MacElroy, Douglas
Marshall, John
McHugh, Warren
Merrill, Russell
Oliver, Vincent, Mgr.
Pihl, Roger

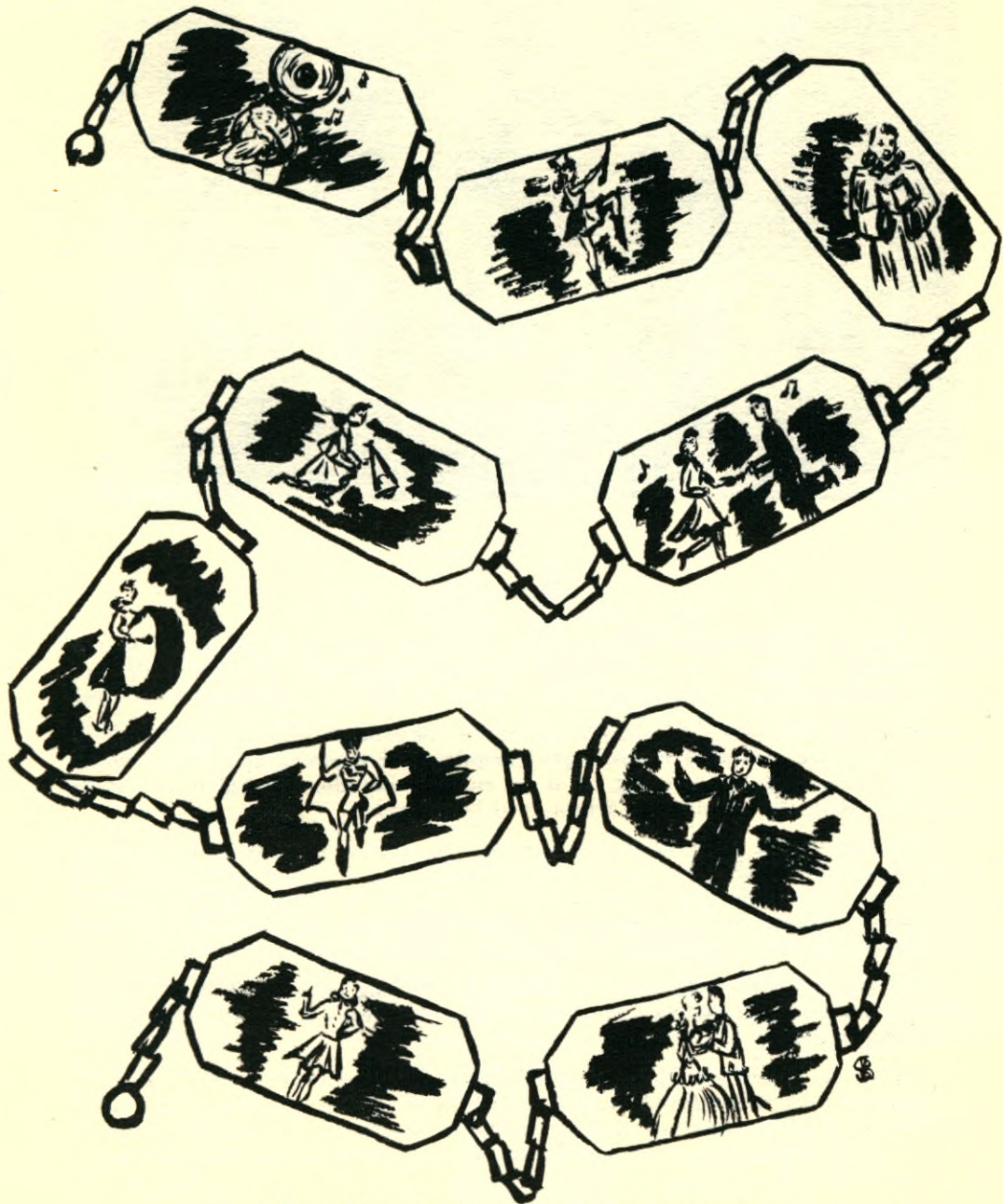
Cheerleaders

Ayotte, Dorothy, Mascot
Ayotte, Lucille
Bomil, Janet, Capt.
Brooks, Lois
Burt, Carolyn
Cochrane, Beverly
Cole, Muriel
Colmer, Shirley
DeGuise, Eleanor
Hildreth, Nancy
Marcotte, Estelle
McDonald, Rita, Sub-capt.
Mills, Ann
Moss, Mildred
Palmgren, Phyllis
Pickard, Louise
Shawcross, Gail
Sidelinger, Jacqueline
Tibbetts, Charlotte
Toegemann, Dolores
Toms, Patricia
Valentine, Fay, Sub-capt.
Warren, Martha
Wylie, Barbara

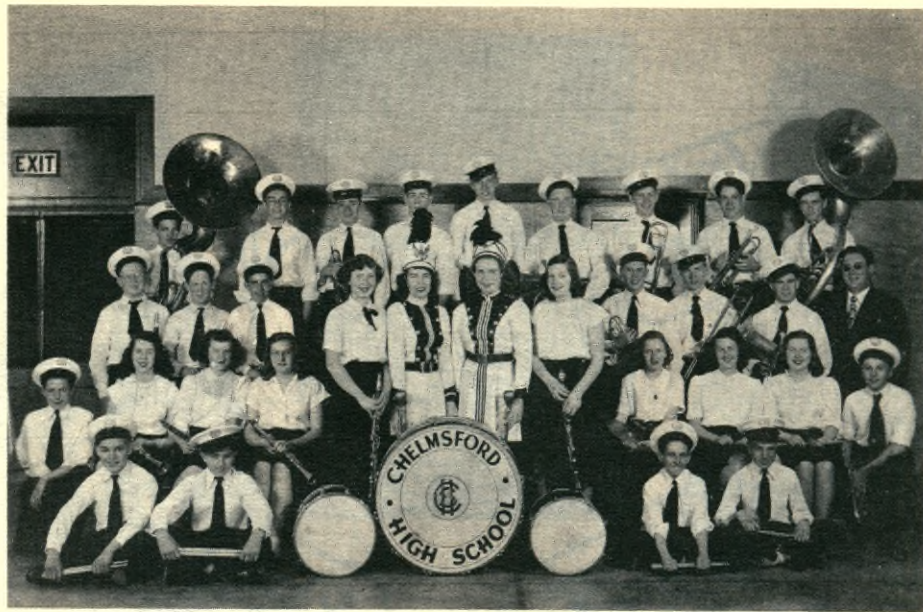
Girls' Basketball

Alexander, Mary
Bishop, Maureen
Blackie, Bessie, Co-Capt.
Clough, Marilyn
Dryden, Joyce
Gannon, Elizabeth
Greenwood, Connie
Hunt, Nancy
Lamb, Nancy, Co-Capt.
Mann, Joyce
Reeves, Evelyn
Sweet, Patricia
Stewart, Betty
Wylie, Barbara





ACTIVITIES



Band

This year the Chelmsford High School band again found itself going full swing, and not even during the summer vacation was there any cessation of activity. A continual round of school graduations and summer concerts permitted no talent to lie idle.

Memorial day was a particularly busy one, for the band paraded in North Chelmsford and then journeyed to Hollis, New Hampshire, for a second appearance, which was followed in turn by an outing. As is the custom, they also accepted an invitation to participate in the Lowell High School Field Day parade.

Next on the list came the summer concerts. In addition to these regular outdoor concerts, one of which drew an estimated audience of a thousand people, the band played for a street dedication, the funeral of a veteran, the St. Mary's Church Carnival, the Firemen's Relief, and the American Legion Convention. Incidentally, our trumpeters have played taps many times at the request of the Legion.

The biggest thrill of the year was, of course, marching in the Holy Name Parade in Boston. Movies of our band in action before four million people will be secured later for Chelmsford audiences.

During the school year the band members have to their credit a benefit concert for the piano fund. They played Christmas carols in all sections of the town and were happily rewarded by a Christmas party at the Westlands School. The final big performance of the year was the fourth annual concert, which gave the satisfaction that townspeople have come to expect.

At the conclusion of another year, the band members thank their leader for the pleasure and profit derived under his excellent leadership. Every rehearsal has been something to anticipate happily, and not for anything would anyone of the fortunate group have missed the privilege of working with Chelmsford's own Bernie Larkin.



Glee Club

The Glee Club, under the direction of Miss Olive Littlehale, has had a very successful year. In December the members presented a Christmas Concert and in April the Spring Concert in the form of an operetta, entitled "The Waltz King." The members of the club feel that this has been an interesting year and that much has been accomplished.

The roster of club members follows:

Abrahamson, Hazel	DeGuise, Eleanor	McDonald, Rita
Adams, Barbara	Dupee, Phyllis	Mills, Ann
Barrows, Barbara	Durkee, Betsy	Mills, Jane
Beausoleil, Doris	Durrell, Norma	Norton, Robert
Bellegarde, Joseph	Gadbois, Lorraine	Palm, Margaret
Bishop, Maureen	Gibbons, Raymond	Palmgren, Phyllis (pianist)
Brake, Nelson	Gonsalves, Theresa	Peverill, Louise
Brown, Eleanor R.	Hadley, Richard	Reis, Allan
Burns, John	Hamel, Ruth	Sargent, Sybil
Chagnon, William	Hardy, Betty	Stewart, Betty
Colby, Phyllis	Harnish, Lois	Toegemann, Dolores
Cole, Muriel	Hayes, Theresa	Warren, Fred
Crowell, Virginia	Jenkins, Margaret	Wilder, Elizabeth
Colmer, Shirley	Kilburn, Jean	Wylie, Barbara
Curtis, Nancy	Leach, Ronald	Young, Alva
	Miss Olive Littlehale, Director	



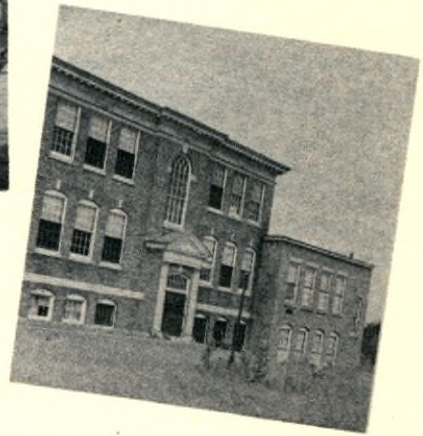
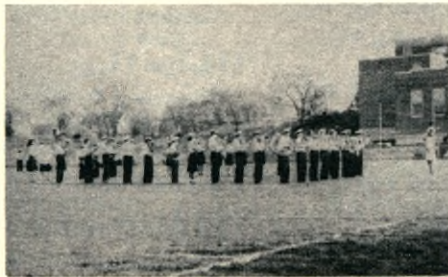
Junior Red Cross

Under the energetic supervision of Miss Marjorie Scoboria, the Junior Red Cross finished a very successful year. At the first meeting the following officers were elected: President, Marjorie Carr; Vice President, Margaret Blott; and Secretary, Gail Shawcross. The homeroom representatives chosen at that same meeting were:

Ayotte, Claire	Brown, Eleanor R.	Kydd, Robert
Barrows, Gladys	Cole, Muriel	Moss, Mildred
Beausoleil, Doris	Foster, Gertrude	O'Neil, Michael
Bishop, Maureen	Gadbois, Pauline	Reeves, Evelyn
Blott, Shirley	Hartley, Joan	Scoble, Fern
Bomil, Janet	Hicks, William	Welch, George
	Jenkins, Margaret	

These representatives succeeded in carrying out a successful membership drive. Nearly all the homerooms had 100% membership and the sum of \$24.73 was collected.

Bi-monthly meetings were held in Miss Scoboria's room. The first project undertaken was to collect material to fill eighteen good will boxes for children overseas. During the winter term, members made two hundred attractively decorated Easter baskets. Later in the spring, one thousand newspaper disposal bags for hospital use were folded.



A.B.C.'s of 1948

A is for Abrahamson, a maiden so fair,
Neat and trim with beautiful hair.

A is for Abrahamson, full of fun,
Never gets his English done.

A is for Adams, the office boy,
Being useful is his joy.

A is for Adams, slender and tall,
A sweet little smile she has for all.

A is for Alexander, on the basketball team,
Her friendship is something we all esteem.

A is for Avila, quiet is she,
A smart little bookkeeper she will be.

A is for Axon, tall and slender,
A helping hand he's sure to render.

B is for Bellegarde, who won't be beat,
He would rather argue than eat.

B is for Blackie, an artist indeed,
With paint and brushes she'll succeed.

B is for Bovill, short and sweet,
On the dance hall floor, she can't be beat.

B is for Brake, who seems to be quiet,
But he really isn't, he's a riot.

B is for Brown, a likeable lass,
Plays the piano, pride of her class.

B is for Brown, a lovely girl,
Pretty hair with a bit of curl.

B is for Buchanan, merry and gay,
Can't seem to wait for the final day.

B is for Burns, who loves to read,
A successful life we're sure he'll lead.

B is for Burroughs, whose dress is snappy,
Favors Ted Williams, always happy.

B is for Byam, a nurse to be,
Success in training we hope she will see.

C is for Cantara, not very tall,
Scored many a touchdown in playing football.

C is for Cincevich, from room 21,
In teasing the girls he really finds fun.

C is for Colmer, so tall and sedate,
With all her classmates she really does rate.

C is for Cross, whose new in our class,
Nice personality, charming lass.

D is for Daigle, a dashing blond,
Of a fellow named "Jerry" she is very fond.

D is for DeGuise, Eleanor that is,
In all her classes she sure is a wiz.

D is for Desmarais, the postal clerk,
Never complaining, enjoys his work.

D is for Dexter, in history supreme,
Knows all the answers, right on the beam.

D is for Durrell, Norma's the name,
With her charming voice we know she'll find fame.

G is for Gonsalves, dark eyed and sweet,
Contributed this alphabet — no minor feat!

H is for Hall, quiet is she,
Smart little lady, an R. N. to be.

H is for Hankinson, encircled in horn,
Never a better gentleman born.

H is for Harnish, whose dress is fancy,
Often seen with her girl friend Nancy.

H is for Hartley, able is she,
A shining success we know she will be.

H is for Hefler, who likes to sing,
Grand sense of humor, our own Bing.

H is for Hodgson, who loves a high heel,
Sweet disposition, lots of appeal.

H is for Hunt, so very small,
We'll buy her some yeast to make her grow tall.

J is for Johnson with talents so rare,
To do anything naughty she wouldn't dare.

K is for Kilburn, a brilliant girl,
Her future lies in the business world.

L is for Lagasse, with lots of clothes,
Neat as a pin, has many beaus.

L is for Lakin, never mischief free,
She should cut down on her vitamin C.

L is for Lewis, with his hair cut short,
A lovely young lady he admires from North.

L is for Logan, who chums with Jo,
She hails from North and lets everyone know.

A.B.C.'s of 1948

- L is for Logan, cousin to Jean,
"Gym today — isn't that mean?"
- M is for MacElroy, known as Mac,
In shooting baskets he sure has the knack.
- M is for McDonald, who managed the team,
With his clarinet he's on the beam.
- M is for McEnany, who's known afar,
Hearty laughter, basketball star.
- M is for McEvoy, the physics wiz,
Proud of North, scoffs at a quiz.
- M is for Mcagher, that popular kid,
As a tackler he shone on the grid.
- M is for Mercier, with the natural kink,
She's not as quiet as you might think.
- M is for Merrill, who beats the drum,
Shy with the girls, but he's improving some.
- M is for Miller, with the "Baby Face",
To the office he goes at a right fast pace.
- M is for Mills, with the lovely voice,
To sing in operas should be her choice.
- M is for Milton, known as Slim,
At the "Lion's Den" is where you'll find him.
- M is for Miner, a partner in crime,
Seen with Murph most of the time.
- M is for Mortham, our own Billy Boy,
With the girls he's oh, so coy!
- M is for Murphy, the movie goer,
Earns her money at the ten cent store.
- N is for Norton, a riot is he,
A radio comedian he ought to be.
- O is for Oliver, of athletic build,
In playing football he surely is skilled.
- O is for Olsson, an engineer to be,
Known as "The Genius" of period 3.
- P is for Palm, who from Bridgeport did come,
Beautiful clothes, Mary's chum.
- P is for Parlee, nickname Bob,
A mass of curls tops his knob.
- P is for Pedersen, husky and blond,
Of dear old South he is very fond.
- P is for Pickard, shy and demure,
To do her shorthand, she is sure.
- P is for Pike, Ray the third,
Enjoys fishing we have heard.
- R is for Randall, reserved for Jean,
At writing poems he's mighty keen.
- R is for Reid, good in baseball,
Nice personality and that isn't all.
- R is for Riley, always with gum,
If you haven't any, he has some.
- R is for Robey, busy man,
Plays the trumpet in the band.
- S is for Scoble, with the charming way,
Likes to type, always gay.
- S is for Shea, with the pretty hair,
Of nice clothes she has her share.
- S is for Shea, hails from West,
Loves to study for a physics test.
- S is for Sousa, fun-maker at lunch,
Especially when she's with that bunch.
- S is for Stewart, North's star rider,
Gallops pell-mell with her father beside 'er!
- S is for Sullivan, who cheers for the green,
Dispatching taxis is his routine.
- S is for Swanson, mighty short is he,
A future accountant he plans to be.
- T is for Toegemann, who likes to cook,
The trouble is she writes her own book.
- V is for Vinal, the "Blond Sailor" to be,
Luck in his voyages on the sea.
- W is for Whitworth, a doodler in class,
Reserved for a pretty, flaxen-haired lass.
- W is for Wylie, who leads the cheers,
Only in name is she in arrears.

Rita M. Gonsalves, '48